



# 50<sup>th</sup> ANNIVERSARY PUBLICATION

A RECORD OF PAST  
PRODUCTIONS

VOLUME 4

the fourth decade

2002 to 2011





# PRODUCTION INDEX

<b>2002</b>	Steel Magnolias
	Caravan
	There, there
<b>2003</b>	Come Back to the Five and Dime Jimmy Dean, Jimmy Dean
	Arcardia
<b>2004</b>	Beyond Reasonable Doubt
	Hobson's Choice
<b>2005</b>	On Golden Pond
	Love Letters
	How the Other Half Loves
<b>2006</b>	Gaslight
	Easter Weekend
	The Odd Couple – The Female Version
<b>2007</b>	Daylight Saving
	Outside Edge
<b>2008</b>	It's My Party and I'll Die if I Want To
	Wait Until Dark
<b>2009</b>	Hotel Sorrento
	Proof
<b>2010</b>	One Flew Over the Cuckoo's Nest
	Female of the Species
<b>2011</b>	Scenes from a Separation
	Life After George

## *Titbits & Anecdotes* *from the fourth decade*

For the production of *Steel Magnolias* in 2002, hairdresser Arturo Taverna kindly gave permission for The Stirling Players to raid their storeroom at Torrensville to find the 1980s hair dryers and sinks required for the set. As a thank you, AT staff were given complimentary tickets. They loved the show. Most had not been to Stirling before.

*Caravan* was the second production for 2002, SA's premiere production of the Australian farce with a re-written Act 2. It was pleasing to see it again so enthusiastically received by audiences. After all, who can do an Aussie accent quite like an Aussie? The caravan built for the set was magnificent and very impressive with all the right 'gear' inside.

This was the decade where fund-raising and supportive collaborations were promoted with great success including:- a promotional launch at 'Jimmies Pizzas' in Crafers for the production of *Come Back to the Five & Dime, Jimmy Dean, Jimmy Dean*;- a fund-raising agreement with the Women's and Children's Hospital for *Beyond Reasonable Doubt* and;- a collaboration with the Heathfield High School Arts Program resulting in Jason Koen, a talented Year 12 music student, composing the beautiful scene-linking music for two productions, *On Golden Pond* and *Love Letters*

The *Beyond Reasonable Doubt* set was really 2 in1, a panelled courtroom in Act 1 and with panels off, a fuchsia pink lounge room in Act 2. A work of art!

And then, in 2006, there was the staging of the experimental workshop play *Easter Weekend* written and directed by a Stirling Player. Inexperienced cast and crew were encouraged, with the support & mentoring of experienced members, to 'have a go' at roles, on and off stage, that they had not tried before. Five performances and an appreciative audience resulted in a fun show and an agreeably pleasing profit. But most importantly, a chance for SP people to spread their wings & learn new skills!

In *Wait Until Dark*, the director provided the opportunity for 2 senior members of the Hills Youth Theatre to share the role of a London teenager. Conscious of the pressure of schoolwork, sport, and other interests for teenage girls, he elected to cast two girls to spread the load of the role and provide valuable 'on-stage' experience for both.

The show must go on! During *The Odd Couple* the director was hospitalised during the rehearsal period so a group of experienced SP members stepped up at very short notice to ensure the production went on. And in *One Flew Over the Cuckoo's Nest*, a brave thespian stepped in just 2 weeks before opening night to take on a major role!

The Stirling Players were proud to receive many awards during this decade relating to acting, directing, set design and play genre. There are too many to mention here, but they represented a sure sign of a successfully growing theatre group.



## FOREWORD

This book is a compilation of flyers and cast/crew lists of The Stirling Players' productions for the fourth decade of their existence from 2002 to 2011.

In 2002, The Stirling Players celebrated their 30<sup>th</sup> anniversary, and aptly, founding member and President of the group in that year, Keith Bull, directed *Steel Magnolias* for the March production. Also in 2002, The Stirling Players hosted the 27<sup>th</sup> Hills One Act Play Festival, the last one in which they participated.

Another founding member, John Graham, returned to the Adelaide Hills, and to the group, in 2007 to direct *Daylight Saving*, then continued to direct *It's My Party and I'll Die if I Want To* in 2008, *Hotel Sorrento* in 2009 and *Life After George* in 2011!

During this decade, it was great to see the Stirling Players, together with the musical group and the youth theatre, continue to share their resources and cooperate *as a community for the community*, a unique collaboration that has worked splendidly to provide a continuing program of engaging entertainment to appreciative audiences. Long may the collaboration continue!

Entertainment that 'engages', of course, can mean different things to different people;-- perhaps to see a play that has an educational message, or exposes a social injustice or increases awareness, or maybe just to sit back, have a good laugh and forget all the daily cares. So a 'community theatre' should aim to present a diverse range of plays to maximise enjoyable entertainment for a broad spectrum of their community. It is evident that during this decade, an interesting varied program of plays of diverse genre was carefully selected and presented with this aim in mind.

And not to forget that all this was managed by a dedicated team of volunteers who willingly gave their all to ensure each production provided enjoyment for their audiences. A group of amateurs that got involved, over an intense three month period, in doing something they love. The definition of 'amateur' as "*one who follows a pursuit for the love of it (and not for money)*" accurately describes those who continue to be involved in mounting shows at the Stirling Community Theatre. The reward is pride in a team job well done and continuing appreciative audiences.

Enjoy this record of past shows. Hopefully it will stir pleasurable memories. The aim has been to depict the original flyers and cast/crew lists as authentically as possible. Some titbits of information and anecdotes from the decade are included on the facing page.

August 2021



# The Stirling Players

By special arrangement with Dominie Pty. Ltd.

*Proudly presents*



# Steel Magnolias

Directed by **Keith Bull**

**STIRLING COMMUNITY  
THEATRE**

Avenue Road, Stirling

**5, 6, 12, 13, 19, 20 April 2002 at 8pm**

**13 April 2002 at 2pm**

## TICKETS

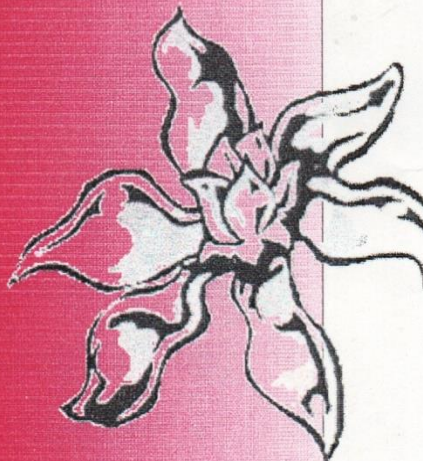
**Adult \$15    Concession \$13**

**Groups of 10 or more \$10 each**

## BOOKINGS

**Stirling Newsagency & Stationers 8339 4041**

**Group Bookings Keith Bull 8388 5415**



# Cast of Characters

<b>Truvy</b>	<b>Bernadette Bycroft</b>
<b>Annelle</b>	<b>Allison Scharber</b>
<b>Clairee</b>	<b>Sylvia Fanning</b>
<b>Shelby</b>	<b>Rachel Spargo</b>
<b>M'Lynn</b>	<b>Joanne St. Clair</b>
<b>Ouiser</b>	<b>Jessica Gosnell</b>

# Production Credits

Director	Keith Bull
Assistant Director	Clare Mansfield
Stage Manager	Malcolm Horton
Assistant Stage Manager	Justin Nicholas
Production Co-ordinator	Vee Noble
Set Design	Denis Noble
Set Construction & Painting	Sloggem & Patchett (alias Denis Noble & Keith Bull)
	Viktoria & Kevin Burrett
Properties	Viktoria Burrett
Lighting design	Malcolm Horton
Lighting/Sound	Liz Raymond
	Danny Gibbins
Set Dresser	Viktoria Burrett
Costumes	Susan Blockley & Viktoria Burrett
Accent Coach	Gaye Moran
Front of House	Vee Noble
Photographer	Evonne Smith
Publicity	Martin Walsh
Business Manager	Denis Noble
Program & Tickets	Malcolm Horton
Poster	Malcolm Horton
Banners	Banner Master

*The*  
**Stirling Players Inc**  
*present*  
**Donald MacDonald's**  
*Hilarious Australian Comedy*



*Directed by Linda Davey*

**Stirling Community Theatre**  
**Avenue Road, Stirling**  
**27th, 28th September.**  
**4th, 5th, 11th, 12th October 2002**  
**At 8.00pm**



## **The Cast**

In order of appearance

Penny Robinson	MANDY QUINN
Parkes Robinson	ANDREW HORWOOD
Rodney Rice	PETER DAVIES
Monica Rice	TRACEY WALKER
Pierce	JOHN KOCH
Gwendolyn	GEORGIA DODD

## **The Production Team**

Director	LINDA DAVEY
Production Co-ordinator	VEE NOBLE
Stage Manager	DENIS NOBLE
Assistant Stage Manager	DAVID GREIG AMY KEATING
Director's Assistant	AMY KEATING
Lighting and Sound	LIZ RAYMOND DANNY GIBBINS
Set Dressing, Costumes , Properties	VIKTORIA BURRETT AMY KEATING
Set and Lighting Design	ANDREW NOBLE
Construction Team	KEVIN BURRETT MIKE CROOME DAVID GREIG DENIS NOBLE
Set Painters	VEE NOBLE DENIS NOBLE VIKTORIA BURRETT
Photographer	EVONNE A SMITH
Front-Of-House	BEC SMITH, assisted by members of the Stirling Players
Publicity	VEE NOBLE, MIKE CROOME, VIKTORIA BURRETT
Business Manager	DENIS NOBLE
Poster and Flyer Design	ELIZABETH BEVAN
Programme	DENIS NOBLE

# Stirling Players

Presents

## The 27<sup>th</sup> Annual Hills Festival of One Act Plays



Featuring Performances by

Stirling

Blackwood

Opus 1

Venture

Opus 2

Strathalbyn

... plus a play reading by Murray Bridge.

**Stirling Community Theatre**

**Avenue Road, Stirling**

**July 26<sup>th</sup> and July 27<sup>th</sup> 2002**

**Past Winners 1991 to 2001**

**Friday 26<sup>th</sup> July, 8pm**

**Stirling Players**

Presents

*There, there . . .*

By Martin Walsh

Directed by Bernadette Bycroft

**Cast**

Jenny

Rebecca

Bill Putnam

Stephanie Putnam

Annette

Robert

Ms Evans

Amie Kendall

Anika Perry

Erik Michielsen

Jo St Clair

Roziye Delaney

Russell Hutchinson

Bernie Paulger

**Crew**

A variety of helpers

A girl suffers mental health  
problems but no-one notices  
until it may be too late

# The Stirling Players

Est. 1972

Presents

## "Come Back to the 5 & Dime Jimmy Dean, Jimmy Dean"

By Ed Graczyck

Comedy - Drama

Directed by **Geoff Brittain**

Produced by special arrangement with Samuel French Inc

*"In a small-town dime store in West Texas,  
the disciples of James Dean, now middle-aged,  
gather for their twentieth reunion.*

*The ladies' reminiscences mingle with flash-backs  
to their youth; then the arrival of a momentarily  
unrecognised woman sets off a series of upsetting  
and revelatory confrontations.*

*The action takes place in 1975, and, in recall, 1955"*

**March 27, 28, 29**

**April 3, 4, 5, 10, 11 & 12 at 8pm**

**April 6 Twilight Performance 5pm**

**Stirling Community Theatre**

**Avenue Rd, Stirling**

[www.adam.com.au/britfest](http://www.adam.com.au/britfest)

 **Imprints**  
BOOKSELLERS

  
**Festival  
BRITTAIN  
2003**

## CAST

JUANITA	Madeleine Marin
MONA	Nicole Ruddy
MONA THEN	Hilary Coleman
SISSY	Verity Dixon
SISSY THEN	Miranda Bryce
JOE	Russell Hutchinson
JOANNE	Tracey Walker
STELLA MAY	Mandy Quinn
EDNA LOUISE	Lindy LeCornu

\*\*\*\*\*



For live theatre to survive  
we need to get people  
back into our auditoriums.  
What keeps them away?

Is it the cost? Is it the location? Is it the quality  
of the show?

Hundreds of practitioners are involved everyday  
of the year producing theatre productions - to  
what end? To play to empty houses?

This festival is inexpensive, located in accessi-  
ble venues, and comprised of top quality  
productions.

We have done most of the work - now all you  
have to do is support your local theatre group.

[www.adam.com.au/britfest](http://www.adam.com.au/britfest)

\*\*\*\*\*

## ACKNOWLEDGEMENTS

Thankyou for your support

Hills Industries  
Sybil Woollard

## CREW

PRODUCTION COORDINATOR	Viki Burrett
DIRECTOR	Geoff Brittain
DIRECTOR'S ASSISTANT	Jennie Dyster
PUBLICITY COORDINATOR	Kerry Edwards Michelle Milette
BUSINESS MANAGER	Denis Noble
FRONT OF HOUSE	Shelly Howe & Stirling Players
STAGE MANAGER	Jim Howe
STAGE CREW	Jim Howe Martina Claus Tracey Klose
SET DESIGN	Geoff Brittain Denis Noble
SET CONSTRUCTION	Denis Noble Dave Grieg
SET DRESSERS & PROPS	Viki Burrett Geoff Brittain Denis Noble Dave Grieg
LIGHTING DESIGN	Andrew Noble
SOUND & LIGHTING	Liz Raymond Danny Gibbins
COSTUMES	Viki Burrett
PROGRAMME	Shelly Howe
POSTER	Michelle Milette
PHOTOGRAPHER	Evonne Smith
CHOREOGRAPHER	Tracey Klose
SCENIC PAINTING	Freya Farrer Michael Graham
HAIRDRESSER	Stenna Lazaroff

The Stirling Players Present by special arrangement with Dominie Pty Ltd

# ARCADIA

**STIRLING COMMUNITY THEATRE**

Avenue Road, Stirling

26, 27 Sept. 3, 4, 10, 11 Oct. at 8.00pm

5 October at 5.00pm

**Bookings**, Stirling Newsagency 8339 4041

**Tickets** \$15, \$13, groups of 10 or more, \$10

**Group bookings** 8339 3173

a romantic comedy

by **Tom Stoppard**

directed by Alice Teasdale

## CAST

*The scene is a room in Sidley Park, the Coverly Estate.*

1809-1812

Septimus Hodge <i>the tutor</i>	Andrew Clark
Lady Thomasina Coverly <i>his pupil</i>	Clare Mitchell
Augustus Coverly <i>Thomasina's brother</i>	Tim Deane-Freeman
Lady Croom <i>Thomasina's mother</i>	Bernadette Bycroft
Captain Brice <i>Lady Croom's brother</i>	James Elliston
Mr Noakes <i>The landskip architect</i>	Hamish Macintyre
Mr Chater <i>A guest</i>	David Lockwood
Jellaby <i>the butler</i>	Denis Noble

Modern Day

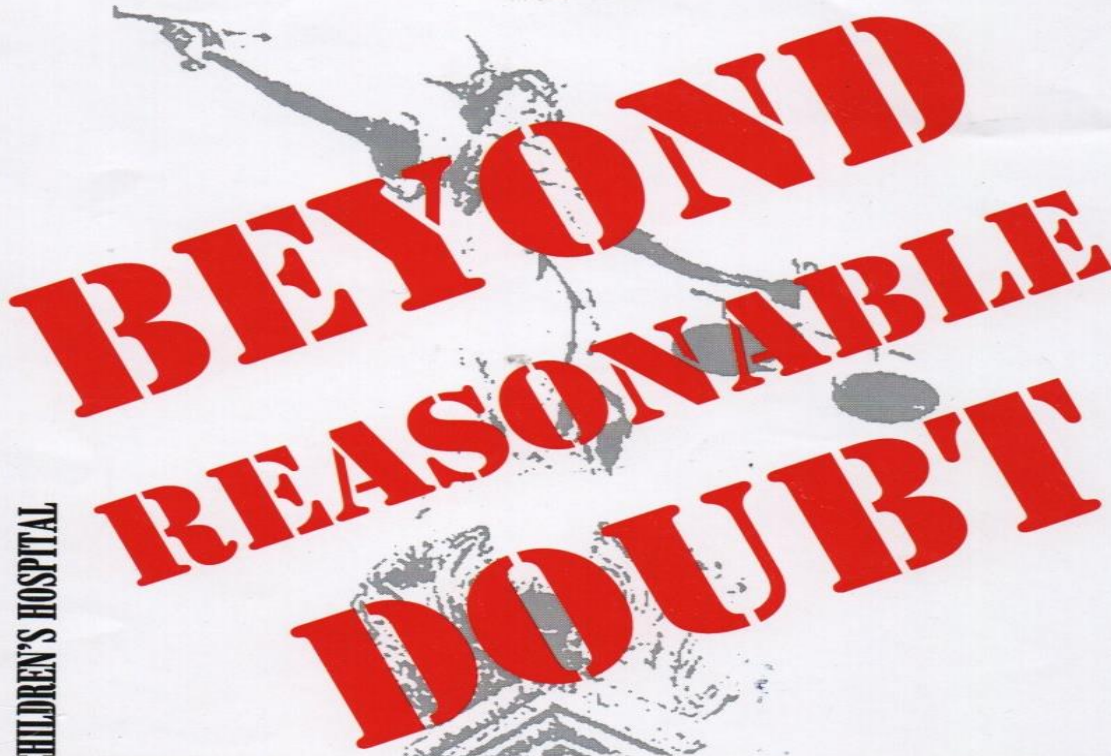
Hannah Jarvis <i>a researcher</i>	Nicole Ritty
Bernard Nightingale <i>another researcher</i>	Peter Davies
Valentine Coverly	Hamish Macintyre
Chloe Coverly <i>Valentine's sister</i>	Georgia Dodd
Gus Coverly <i>Valentine's brother</i>	Tim Deane-Freeman

## CREW

Production Co-ordinator	Viki Burrett
Director	Alice Teasdale
Assistant Director	Jennie Dyster
Stage Manager/Researcher	Jim Howe
Set & Lighting Designer	Andrew Noble
Set Construction/Painting	Denis & Andrew Noble, Jim & Shelly Howe, Roger Landström, Alice Teasdale & Stirling Players
Publicity Co-ordinator	Shelly Howe
Business Managers	Vee & Denis Noble
Front of House	Stirling Players
Assistant Stage Manager	Martina Claus
Props/Stage Crew	Natalie Stalenburg
Hair Dresser	Vicky Shelley
Lighting Operators	Liz Raymond & Danny Gibbins
Sound Designers & Operators	Liz Raymond & Danny Gibbins
Costumes	Viki Burrett, Alice Teasdale, Shelly Howe, Caroline Rola-Wociechowski, Vicky Shelley
Pianist/Music Consultant	Jasmine Lim
Poster Design	Denis Noble & Alice Teasdale
Theodolite construction	Joe Vardon
Turtle construction	Scott Venner
Photographer	John Venus

THE STIRLING PLAYERS PRESENT

By special arrangement with Dominie Pty Ltd



**BEYOND  
REASONABLE  
DOUBT**

WOMEN'S AND CHILDREN'S HOSPITAL

ONE DOLLAR FROM EVERY TICKET SOLD DONATED TO THE



A Thriller by  
**Jeffrey  
Archer**

Directed by

**Linda Davey**

At the STIRLING COMMUNITY THEATRE

Avenue Road, Stirling

30 April, 1, 7, 8, 14, 15 May 2004 at 8.00pm

Sundays 2, 9 May 2004 at 4.00pm

Tickets \$15, \$13 concession

Bookings, STIRLING NEWSAGENCY 8339 4041

Groups of 10 or more \$10

Group Bookings 8339 3173



Women's  
& Children's  
Hospital  
ADELAIDE



## **THE CAST** In order of appearance

Prison Officer	Dave Tagg
Stenographer	Vicky Wray
Clerk of the Court	Paul Bladon
Robert Pierson	Michael Papps
Sir David Metcalfe QC	Michael Croome
Mr. Cole	Malcolm Walton
Anthony Blair-Booth QC	Denis Noble
Mr. Justice Treadwell	Graham Nerlich
Detective Chief Inspector Travers	Andrew Horwood
Mrs. Rogers	Mandy Quinn
Dr. Weeden	Peter Kentish
Lionel Hamilton	Tony Rogers
Lady Metcalfe	Julle Quick

## **THE CREW**

Director	Linda Davey
Stage Manager	Shelly Howe
Production Co-ordinator	Viki Burrett
Set Designer	Roger Landstrom
Set Construction and painting	Roger Landstrom, James Elliston, Denis Noble, Paul Bladon, Kevin Burrett and Members of the Stirling Players.
Costumes	Viki Burrett
Business Manager	Vicki Shelley
Front-of-House Managers	Vee Noble
Lighting design	Vicki Barrett, Vee Noble and members of the Stirling Players
Lighting and sound operations	Andrew Noble
Publicity	Liz Raymond
Programme, Poster and Flyer	Danny Gibbins
Properties	Shelly Howe
Sketch Artist	Vicki Shelley
	Denis Noble
	Vicki Shelley
	Shelly Howe
	Tim Ide

THE STIRLING PLAYERS INC PRESENT

BY SPECIAL ARRANGEMENT WITH DOMINIE PTY LTD

# HOBSON'S CHOICE

A RICH  
LANCASHIRE  
COMEDY

by  
**HAROLD BRIGHOUSE**  
directed by  
**PATTY ATHERTON**

STIRLING COMMUNITY THEATRE

Avenue Road, Stirling

October 29,30, November 5, 6, 12, 13,

at 8.00pm

Sundays October 31, November 7 at 4.00pm

\$15-00, concession \$13-00

Groups of 10 or more, \$10-00

All Bookings, including groups,

STIRLING NEWSAGENCY 8339 4041

[www.sct.org.au](http://www.sct.org.au)

ONE DOLLAR FROM EVERY TICKET SOLD WILL BE PAID TO THE WOMENS AND CHILDRENS HOSPITAL



Women's  
& Children's  
Hospital  
ADELAIDE

# **The Cast** in order of appearance

<b>Alice Hobson</b>	<b>Sophie Edhouse</b>
<b>Maggie Hobson</b>	<b>Mandy Quinn</b>
<b>Vickey Hobson</b>	<b>Tracey Shepard</b>
<b>Albert Prosser</b>	<b>Frank Davies</b>
<b>Henry Hobson</b>	<b>John Murray</b>
<b>Mrs Hepworth</b>	<b>Vicki Barrett</b>
<b>Tubby Wadlow</b>	<b>Peter Smith</b>
<b>Will Mossop</b>	<b>Tim Williams</b>
<b>Jim Heeler</b>	<b>Malcolm Walton</b>
<b>Ada Figgins</b>	<b>Jenna Kuerschner</b>
<b>Fred Beenstock</b>	<b>Paul Beames</b>
<b>Dr MacFarlane</b>	<b>Fred Guilhaus</b>

## **The Crew**

Director	Patty Atherton
Production Manager	Vee Noble
Stage Manager	Paul Bladon
ASM	Tony Rogers
Director's Assistant	June Barker
Set Designer	Denis Noble
Set Construction	Paul Bladon , Dave Greig, Fred Guilhaus, John Murray, Denis Noble, Tony Rogers, Peter Smith, Erik Strauts, Kevin Ward, Tim Williams,
Stage Crew	June Barker, Dave Greig, Malcolm Walton
Lighting Design	Andrew Noble, Jon McKay
Lighting & Sound	Liz Raymond & Danny Gibbins
Operation	Patty Atherton, Viktoria Burrett, Libby Wells
Costumes	Sandra Davis
Milliner	Vicki Shelley
Hairdresser	Bree Burrett, Martina Claus,
Dressers	Libby Wells
Properties	Vicki Shelley
Set Dresser	Peter Smith
Publicity	Gail Landry, Shelly Howe
Ticketing	Chris Fryer, Vee Noble
Front of House	Bev Muhlhausler, Vicki Barrett
Graphic Design	And members of the Stirling Players
Programme	Denis Noble
Photography	Linda Davey
	Tony Rogers

THE STIRLING PLAYERS INC. Presents

By arrangement with Hal Leonard Pty Ltd on behalf of Dramatists Play Service Inc New York

# ON GOLDEN POND

by Ernest Thompson    Directed by Tony Rogers

*A gentle comedy of enduring love and human relationships.*

*Ethel & Norman Thayer expect the 48th year at their summer home beside the lake to be quiet and uneventful. Instead, the arrival of family and a teenage boy threatens turmoil, but leads to joy and reflection.*

STIRLING COMMUNITY THEATRE Avenue Road, Stirling.

4,5,11,12,18,19 March 2005 at 8pm    Sundays 6, 13 March 2005 at 4pm

Adults \$16    Concession \$14    Groups of 10 or more \$11    All bookings at Stirling Newsagency 8339 4041

Part proceeds support Heathfield High School Arts Programs.



## THE CAST (in order of appearance)

Norman Thayer, Jr	-	Graham Nerlich
Ethel Thayer	-	Vee Noble
Charlie Martin	-	Malcolm Walton
Chelsea Thayer-Wayne	-	Sophie Edhouse
Billy Ray	-	Josh Sanders
Bill Ray	-	Dave Greig

## THE CREW

Director	-	Tony Rogers
Production Manager	-	Amy Greig
Stage Manager	-	Erik Strauts
Assistant Director	-	June Barker
Set Designer	-	Roger Landstrom
Lighting Design	-	Andrew Noble
Lighting & Sound Operation	-	Liz Raymond/Danny Gibbins
Properties	-	Chris Fryer
Assistant Properties	-	Heather Jones
Costumes/Set Dressing	-	Viktoria Burrett
Hair/Makeup/Set Dressing	-	Vicki Shelley
Voice Coach/Prompt	-	Kathy Strauts
Front of House Manager	-	Bev Muhlhausler
Publicity	-	Amy Greig
Ticketing	-	Vicki Barrett
Program	-	Tracey Shepard/Paul Bladon
Photographs	-	Denis Noble/Tony Rogers
Set Construction	-	Roger Landstrom
		Denis Noble
		Dave Greig
		Erik Strauts
		Kevin Burrett
		Kevin Ward
		Suzanne Koen

**THE STIRLING PLAYERS PRESENT**

By arrangement with Hal Leonard Australia Pty Ltd, on behalf of Dramatists Play Service Inc, New York

**by A. R. Gurney, Directed by Ian Maitland**  
**Starring Pamela O'Grady and Ted Schwerdt**

**Love Letters**

**JULY 2005**

**[www.sct.org.au](http://www.sct.org.au)**

## Cast

Andrew Makepeace Ladd III - Ted Schwerdt  
Melissa Gardner - Pam O'Grady

## The Crew

Director	-	Ian Maitland
Production Manager	-	Tony Rogers
Stage Manager	-	Dave Greig
Set/Photographs	-	Denis Noble
Lighting	-	Danny Gibbins
Lighting Adviser	-	Andrew Noble
Sound	-	Liz Raymond
Lighting & Sound Assistant	-	Eileen Walton
Lighting & Sound Assistant	-	Justin Hoskins
Costumes	-	Viki Burrett
Publicity	-	Vee Noble
Front of House Manager	-	Bev Muhlhausler
Programme	-	Tracey Shepard
Business Manager	-	Vicki Barrett

# 'HOW THE OTHER HALF LOVES'

## Alan Ayckbourn's Hilarious Farce

Presented by the Stirling Players  
by special arrangement with Dominic Pty Ltd

Directed by Erik Strauts

On 30 September and 1,7,8,14,15 October at 8pm  
Sundays 2,9 October at 4pm

At the Stirling Community Theatre  
Avenue Road, Stirling

\$16 • Concessions \$14 • Groups of 10 or more \$11  
Bookings Stirling Newsagency 8339 4041



THE  
*Stirling  
Players*  
INCORPORATED



## THE CAST

Frank Foster.....	David Lockwood
Fiona Foster.....	Mandy Quinn
Bob Phillips.....	Sam Priestly
Teresa Phillips.....	Vicki Barrett
William Featherstone.....	Jarrold Chave
Mary Featherstone.....	Sophie Edhouse

## THE CREW

Director.....	Erik Strauts
Assistant Director.....	Kathy Strauts
Production Manager.....	Vee Noble
Stage Manager.....	Susanne Koen
Assistant Stage Manager.....	Dave Grieg
Set Designer.....	Roger Landstrom
Set Dressing.....	Viki Burrett
Sound & Light Operator.....	Justin Hoskins
Assistant Sound & Light.....	Eileen Walton
Properties.....	Chris Fryer
.....	Heather Jones
Costumes.....	Viki Burrett
Assistant Costumes.....	Patty Atherton
Front of House...Vee Noble & Bev Muhlhausler	
Publicity.....	Vee Noble
Ticketing.....	Chris Venning
Programme.....	Bev Muhlhausler & Denis Noble
Business Manager.....	Vicki Barrett
Photographer.....	Denis Noble
Set Construction.....	Malcolm Walton
assisted by Roger Landstrom, Kevin Ward	
TimWilliams, Dave Grieg, Paul Bladon &	
Erik Strauts	



# GASLIGHT

CLASSIC VICTORIAN THRILLER BY  
**Patrick Hamilton**

**Presented by the Stirling Players**  
by special arrangement with Dominie Pty Ltd

**Directed by Erik Strauts**

On 5,6,12,13,19,20 May at 8pm  
Sundays 7 & 14 May at 4pm

At the Stirling Community Theatre  
Avenue Road, Stirling

\$16 • Concessions \$14 • Groups of 10 or more \$11  
Bookings Stirling Newsagency 8339 4041  
Booking fee will apply

THE  
*Stirling  
Players*  
INCORPORATED

## Cast

Mr. Manningham	James Elliston
Mrs. Manningham	Alicia Hovell
Rough	Denis Noble
Elizabeth	Stevie Abbott-Richards
Nancy	Jasmine Bates
Policemen	Malcolm Walton, Tim Williams

## Crew

Director	Erik Strauts
Assistant Director and Prompt	Kathy Strauts
Production Manager	Vee Noble
Stage Manager	Susanne Koen
Stage Crew	Sophie Edhouse
Props	Heather Jones
Set Designer and Programme Cover	Denis Noble
Set Dresser	Imelda Grubel
Assistant Set Dresser	Sophie Edhouse and members of Stirling Players
Sound and Light Operator	Tim Williams
Lighting Design	Andrew Noble
Costumes	Viktoria Burrett
Assistant Costumes	Patti Atherton
Makeup Consultant	Melinda Pipkorn
Front of House	Malcolm Walton
Publicity	Vee Noble
Ticketing	Chris Venning
Programme Content and Photographer	Tony Rogers
Graphic Design	Don Hatcher
Set construction	Denis Noble, Erik Strauts, Paul Bladon, Dave Greig, James Elliston, members of Stirling Players

The Stirling Players Inc presents  
a studio-workshop production of



# *Easter Weekend*

A comedy  
written & directed by Tony Rogers

Pastor John Jedd is pro-celibacy, anti-gambling, and pro-temperance and has a very orderly life. Things start to unravel, however, when his sister turns up after an absence of some twenty years. She not only brings her horse for the Oakbank Races, but also some old family secrets. The laughs increase as Pastor John loses control.....

**15, 21, 22 July 2006 at 8.00pm  
and 16 July 2006 at 2.00pm**

**Stirling Community Theatre, Avenue Road, Stirling**

**Meal and Show Deal at Stirling Hotel  
only \$20.00 - phone 8339-2345**

**Tickets: \$10.00; \$25.00 - family; \$5.00 - conc./group  
from members or Stirling Newsagency - phone 8339-4041**

**THE  
Stirling  
Players**  
INCORPORATED

**The  
Stirling**

## Cast

*in order of appearance*

John Jedd	John Murray
Sally Jedd	Liz Gebler-Hughes
Sylvia Jedd	Bev Muhlhausler
Mabel Blore	Christine Venning
Gerry Tarver	Dave Greig
Dave Darbey	Paul Kaesler
Georgiana Tidman	Mandy Quinn
Tom Mardon	Malcolm Walton
Lucy Blore	Kathy Strauts
Sam Smith	Mark Kinsley
Gloria	Shirley Hastwell

## Crew

Director	Tony Rogers
Production Manager/Publicity	Amy Greig
Stage Manager/Props	Heather Jones
Assistant Production/Publicity	June Barker
Set Designer	Josh Sanders
Lighting Design/Operation	Danny Gibbins
Sound	Eileen Walton
Properties	Heather Jones
Costumes/Set Dressing	Nadine Kinsley
Front of House	Jess Kinsley
Ticketing	June Barker
Programme	Amy Greig & Tony Rogers
Photographs	Denis Noble
Set Construction	Josh Sanders, Liz Gebler-Hughes, Shirley Hastwell, Christine Venning, Dave Greig, Malcolm Walton, Mandy Quinn and others

## A new approach

**Welcome to our first studio/workshop production!**

If you are part of Stirling Players' regular audience, you will have already noted the lower ticket prices and the free programme. It looks a little less slick than our usual one, but it gives you all the information you need.

On stage, the production may look a bit different too. Our set designer is trying out new ideas and it's his first set design for us. You'll see unfamiliar faces among the actors. We are introducing some new talent, while other members who usually work backstage are acting for the first time. The play itself is new, set locally and written specially for us. Offstage, people are playing new roles.

This studio/workshop production is a learning experience for us. Participants are working cooperatively to develop some new ideas. We think it can lead to exciting theatre simply because all those involved are prepared to take risks. There could even be the odd glitch! But overall, it's part of keeping Stirling Players as an evolving and successful theatre group.

THE STIRLING PLAYERS PRESENT  
BY SPECIAL ARRANGEMENT WITH DOMINIE PTY LTD



# Odd People

by Heil  
Simon

directed  
by Ian  
Maitland

## the female version

at the STIRLING COMMUNITY THEATRE  
Fridays and Saturdays November 3 to 18, 8.00pm.,  
Sundays, November 5 & 12, 4.00pm

Tickets \$16, conc. \$14, groups \$11 (booking fee applies)  
Tickets on sale from 16 October, Stirling Newsagency, 8339 4041  
Bookings prior to 16 October, call 8339 1825

[www.sct.org.au](http://www.sct.org.au)

## THE CAST (in order of appearance)

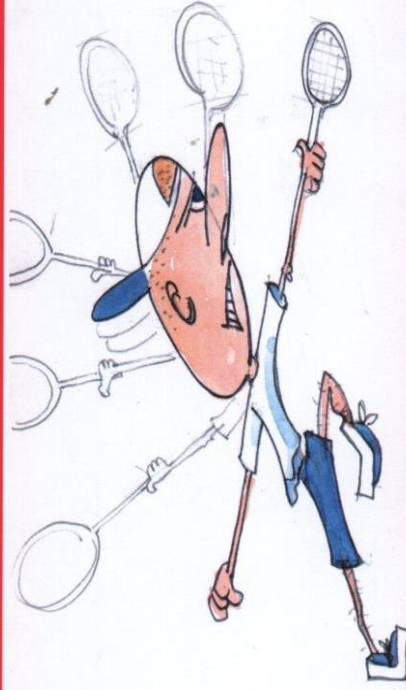
Olive Madison	-	Vicki Barrett
Florence Ungar	-	Gayle Hammond
Mickey	-	Maxine Grubel-Wilson
Renee	-	Mandy Quinn
Vera	-	Kathy Strauts
Sylvie	-	Sophie Edhouse
Manolo Costazuela	-	John Koch
Jesus Costazuela	-	Paul Beames

## THE CREW

Director	-	Ian Maitland
Production Manager	-	Susanne Koen
Co-Production Manager	-	Viki Burrett
Stage Manager	-	Susanne Koen
Assistant Stage Manager & Properties-		Heather Jones
Set Designer	-	Erik Strauts
Lighting Design	-	Erik Strauts
Lighting & Sound Operation	-	Erik Strauts
Prompt & Backstage	-	Sophie Wilson
Wardrobe and Costumes	-	Viki Burrett, Elizabeth Shillabeer, Beverly Muhlhausler
Hair	-	Kim Hills
Make-up	-	Melinda Pipkorn
Front of House Manager	-	Jan Farr
Publicity	-	Mark Kinsley and members of the Stirling Players
Business Manager	-	Denis Noble
Ticketing	-	Lori Neilson
Program	-	Bev Muhlhausler, Denis Noble
Front-of-House Photographs	-	Craig Arnold
Set Construction	-	Erik Strauts and members of the Stirling Players
Set Dressing	-	Viki Burrett, Heather Jones
Voice Coaching	-	Penny Bevan
Graphics	-	Denis Noble

[www.set.org.au](http://www.set.org.au)

The Stirling Players present. by arrangement with HLA Management Pty Ltd



# Paylight Saving

at THE STIRLING COMMUNITY THEATRE.

Avenue Road. Stirling

Fridays and Saturdays 16. 17. 23. 24. 30. 31 March 2007 at 8.00pm  
and Sundays 18. 25 March 2007 at 4.00pm.

Tickets \$ 16. concession \$14. groups 10 or more \$11.  
MEAL DEAL - \$26. (Groups \$23) Numbers limited.

Bookings. Stirling Newsagency 8339 4041. Booking fee applies.

The Australian comedy by  
**NICK ENRIGHT**  
directed by

**JOHN GRAHAM**



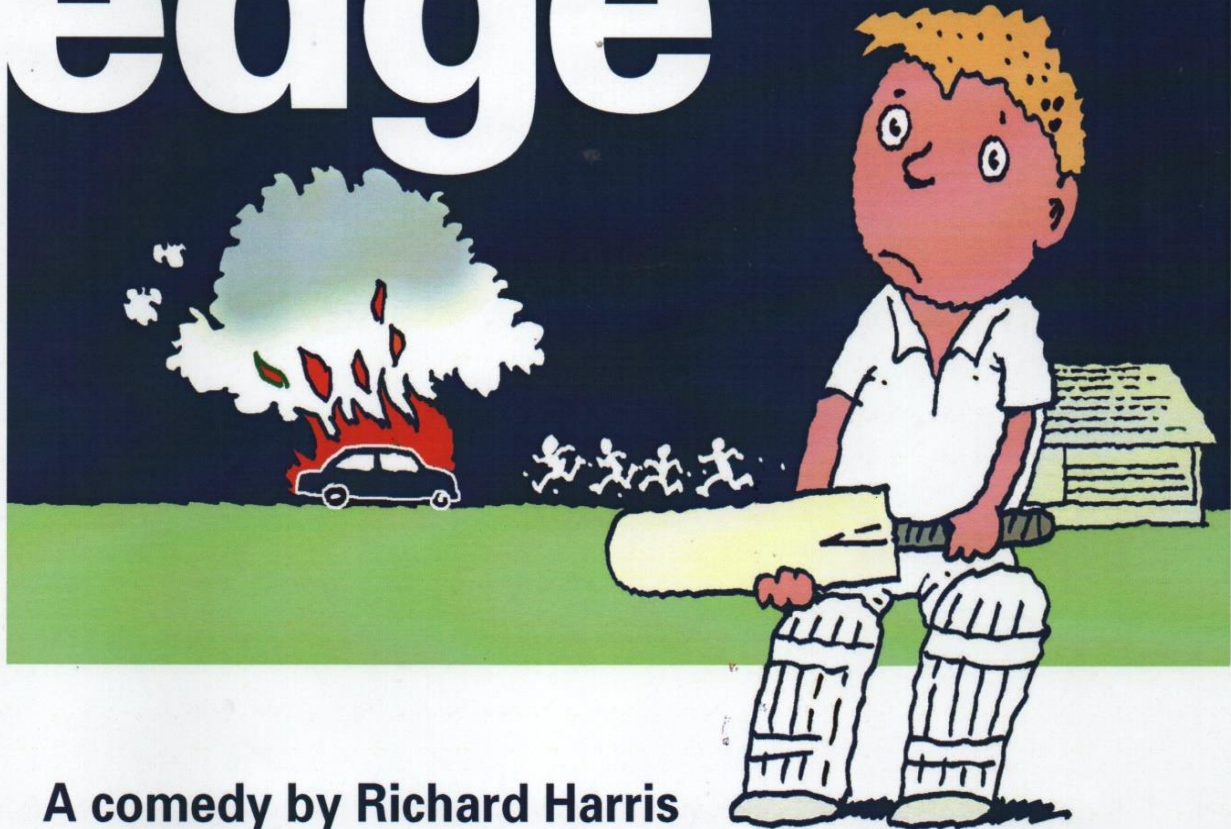
## **THE CAST (in order of appearance)**

Felicity (Flick) Hayes	Vicki Barrett
Tom Finn	John Koch
Bunty Hayes	Vee Noble
Joshua Makepeace	Malcolm Walton
Stephanie	Mo Johnson
Jason Strutt	Kester Moorhouse

## **THE CREW**

Director	-	John Graham
Director's Assistant & Prompt	-	Kathy Strauts
Production Manager	-	Vee Noble
Stage Manager	-	Erik Strauts
Assistant Stage Manager	-	Nick Johnson
Properties	-	Heather Jones
Set Designer	-	Roger Landstrom
Lighting Design	-	Erik Strauts and Danny Gibbins
Lighting & Sound Operation	-	Danny Gibbins
Costumes	-	Viki Burrett, Heather Jones
Dresser	-	Eileen Walton
Hair & Make-up	-	Heather Jones
Front of House Manager	-	Jan Farr
Publicity	-	Beverly Muhlhausler & Lori Nielsen
Business Manager	-	Denis Noble
Ticketing	-	Lori Nielsen
Programme	-	Denis Noble
Front-of-House Photographs	-	Denis Noble
Set Construction	-	Denis Noble, Erik Strauts and members of the Stirling Players
Set Dressing	-	Heather Jones & Viki Burrett
Graphics	-	Denis Noble

# Outside edge



**A comedy by Richard Harris**

**Presented by the Stirling Players Inc**

by special arrangement with Dominie Pty Ltd

**Directed by Tim Williams**

Stirling Community Theatre, Avenue Road, Stirling

Fridays and Saturdays 14, 15, 21, 22, 28, 29 September at 8.00pm

Sundays 16 and 23 September at 4.00pm

Tickets \$17 • Concessions \$15 Booking Fee included

Groups of 10 and more \$12 (when purchased as one transaction)

Bookings open 1<sup>st</sup> week in August at Stirling Newsagency 8339 4041

THE  
*Stirling  
Players*  
INCORPORATED

## The cast

Roger	David Lockwood
Miriam	Mandy Quinn
Bob	Malcolm Walton
Dennis	Denis Noble
Maggie	Sophie Edhouse
Kevin	Brett Woolford
Ginnie	Vicki Barrett
Alex	Kester Moorhouse
Sharon	Jasmine Bates

## The production crew

These are the unseen warriors who make the play possible. Without them, the actors would be unschooled, undisciplined, unclad, unfed and totally unsupported. The show just could not happen without them.

DIRECTOR	Tim Williams
ASSISTANT DIRECTOR	Susanne Koen
PRODUCTION MANAGER	Jan Farr
ASSISTANT PRODUCTION MANAGER	Vee Noble
PROPERTIES	Heather Jones
PROPERTIES ASSISTANT	Karen Jackson
SET DRESSERS	Heather Jones, Viki Burrett
STAGE MANAGER	Susanne Koen
REHEARSAL PROMPT	Elizabeth Shillabeer
SOUND AND LIGHTING OPERATOR	Tim Williams
COSTUMIER	Viki Burrett
DRESSER	Eileen Walton
MAKE-UP AND HAIR	Michelle Gibbs
FRONT-OF-HOUSE MANAGER	Vee Noble
PUBLICITY	Beverly Muhlhausler and Lori Nielsen
TICKETING	Lori Nielsen
PROGRAMME	Denis Noble
BUSINESS MANAGER	Denis Noble
GRAPHIC DESIGN	Don Hatcher
PHOTOGRAPHY	John Venus
SET DESIGN	Josh Sanders
SET CONSTRUCTION	Nick Johnson and members of the Stirling Players.





# IT'S MY PARTY

**AND I'LL DIE IF I WANT TO**

**A black comedy by Elizabeth Coleman**

**Presented by the Stirling Players Inc**

by special arrangement with Cameron Creswell, Sydney

**Directed by John Graham**

Stirling Community Theatre, Avenue Road, Stirling  
Fridays 29 February, 7 and 14 March 2008 at 8.00pm  
Saturdays 1, 8, 15 March 2008 at 8.00pm  
Sundays 2 and 9 March 2008 at 4.00pm

Tickets \$17 • Concessions \$15 Booking Fee included  
Groups of 10 and more \$12 (when purchased as one transaction)  
Bookings open 14 January 2008 at Stirling Newsagency 8339 4041

THE  
*Stirling  
Players*  
INCORPORATED

## **THE CAST (in order of appearance)**

Ron Patterson	Denis Noble
Michael Patterson	Steve Marvanek
Debbie Patterson	Gayle Hammond
Karen Patterson	Jasmine Bates
Dawn Patterson	Jill Morrell
Ted Wilkins	Malcolm Walton

## **THE PRODUCTION CREW**

Thank you to the following people, without whom, this show wouldn't have happened.

**DIRECTOR**

John Graham

**ASSISTANT DIRECTOR**

Susanne Koen

**PRODUCTION MANAGER**

Viki Burrett

**ASSISTANT PRODUCTION MANAGER**

Jan Farr

**PROPERTIES**

Heather Jones

**PROPERTIES ASSISTANT**

Eileen Walton

**SET DRESSERS**

Heather Jones

Viki Burrett

Erik Strauts

**STAGE MANAGER &**

**TECHNICAL DESIGN**

**ASSISTANT STAGE MANAGER &**

Kathy Strauts

**REHEARSAL PROMPT**

**SOUND AND LIGHTING OPERATOR**

Danny Gibbins

**ASSISTANT LIGHTING**

Susanne Koen

**COSTUMER**

Viki Burrett

**DRESSER**

Eileen Walton

**MAKE-UP AND HAIR**

Michelle Gibbs

**FRONT-OF-HOUSE MANAGER**

Vee Noble

**PUBLICITY**

Bev Muhlhausler

**PUBLICITY & TICKETING**

Lori Nielsen

**PROGRAMME**

Jasmine Bates

**BUSINESS MANAGER**

Denis Noble

**GRAPHIC DESIGN**

Don Hatcher

**PHOTOGRAPHY**

John Venus

**SET DESIGN**

John Graham

**SET CONSTRUCTION**

Nick Johnson

& Stirling Players

THE STIRLING PLAYERS present,  
by special arrangement with DOMINIE PTY LTD



# wait until **DARK**

a thriller by **FREDERICK KNOTT**  
directed by **ERIK STRAUTS**

at the **STIRLING COMMUNITY THEATRE**

**NOVEMBER 7, 8, 14, 15, 21, 22 AT 8.00PM**

and **SUNDAYS 9 & 16 at 4.00pm**

tickets \$17, conc. \$15, groups of 10 or more \$12 (when paid as one transaction)

Booking fee included **BOOKINGS from 6 October,**

**STIRLING NEWSAGENCY 8339 4041**

## **THE CAST**

in the order of their appearances

<b>Mike Croker</b>	<b>Paul Davies</b>
<b>Roat</b>	<b>Malcolm Walton</b>
<b>Susy Henderson</b>	<b>David Lockwood</b>
<b>Sam Henderson</b>	<b>Alicia Hovell</b>
<b>Gloria</b>	<b>Paul Beames</b>
	<b>Maisie Fabry and</b>
<b>First Policeman</b>	<b>Briana Bickerdike sharing the role</b>
<b>Second Policeman</b>	<b>Steve Marvanek</b>
	<b>Trevor Hart</b>

## **THE (MOSTLY) UNSEEN HEROES**

without whom The Stirling Players could not have produced this show

<b>DIRECTOR</b>	<b>Erik Strauts</b>
<b>ASSISTANT DIRECTOR</b>	<b>Kathy Strauts</b>
<b>PRODUCTION MANAGER</b>	<b>Vee Noble</b>
<b>STAGE MANAGER</b>	<b>Andrew Zeuner</b>
<b>ASSISTANT STAGE MANAGER</b>	<b>Kristin Telfer</b>
<b>PROPERTIES MANAGER</b>	<b>Heather Jones</b>
<b>SET DESIGNER</b>	<b>Denis Peach</b>
<b>SET DRESSERS</b>	<b>Viki Burrett &amp; Heather Jones</b>
<b>SET CONSTRUCTORS &amp; PAINTERS</b>	<b>Kevin Burrett, Nick Johnson, Susanne Koen, Denis Noble, Erik Strauts, Danny Gibbins</b>
<b>LIGHTING DESIGNER</b>	<b>Danny Gibbins</b>
<b>LIGHTING OPERATOR</b>	<b>Danny Gibbins</b>
<b>SOUND OPERATOR</b>	<b>Vicki Barrett</b>
<b>COSTUMIER</b>	<b>Viki Burrett</b>
<b>DRESSER</b>	<b>Eileen Walton</b>
<b>HAIR AND MAKE-UP ARTIST</b>	<b>Michelle Gibbs</b>
<b>FRONT-OF-HOUSE MANAGER</b>	<b>Jan Farr</b>
<b>FRONT-OF-HOUSE STAFF</b>	<b>Members of The Stirling Players</b>
<b>PUBLICITY MANAGER</b>	<b>Vee Noble</b>
<b>TICKETING MANAGER</b>	<b>Lori Nielsen</b>
<b>GRAPHICS &amp; PROGRAMME DESIGNER</b>	<b>Denis Noble</b>
<b>BUSINESS MANAGER</b>	<b>Him Again</b>
<b>FRONT-OF-HOUSE PHOTOGRAPHER</b>	<b>John Venus</b>

THE STIRLING PLAYERS INC PRESENTS  
PERFORMANCE RIGHTS EXCLUSIVELY LICENSED BY H.L.A.MANAGEMENT PTY LTD.

# HOTEL SORRENTO

THE POIGNANT AUSTRALIAN FAMILY STORY  
BY HANNIE RAYSON



**DIRECTED BY JOHN GRAHAM**

at the STIRLING COMMUNITY THEATRE

March 20, 21, 27, 28, April 3, 4 at 8.00pm

Sundays March 22, 29 at 4.00pm.

Tickets \$17, concessions \$15

groups of 10 or more, \$12 when paid as one transaction

**BOOKINGS at**  
"WISHERS FOR YOU"

(Formerly Stirling Newsagency)

**8339 4055**



## **The Cast**

in the order of their appearances

Hilary  
Marge  
Wal  
Dick  
Meg  
Edwin  
Troy  
Pippa

Mandy Quinn  
Megan Dansie  
Peter Kentish  
Malcolm Walton  
Sophie Edhouse  
Tim Edhouse  
Liam Grant  
Rachel Burfield

## **THE CREW**

Director  
Director's Assistant  
Production Manager  
Assistant Production Manager  
Stage Manager  
Assistant Stage Manager  
Properties  
Properties Assistant  
Set Design  
Set Dressers  
Lighting Design  
Lighting Operation  
Sound Design  
Sound Operation  
Costumes

Dresser  
Hair and Makeup  
Front-Of-House Manager  
Front-Of-House Assistant  
Publicity  
Ticketing  
Programme  
Business Manager  
Graphic Design  
Photographer  
Set Construction

Rehearsal Photographer

John Graham  
Kathy Strauts  
Viki Burrett  
Eileen Walton  
Susanne Koen  
Heather Jones  
Heather Jones  
Jan Farr  
Dennis Peach  
Heather Jones, Jan Farr  
Richard Parkhill  
Danny Gibbins  
Erik Strauts  
Eileen Walton  
Viki Burrett, Michelle Gibbs  
and the cast.  
Michelle Gibbs  
Michelle Gibbs  
Jasmine Bates  
Vee Noble  
Lori Nielsen, Vee Noble  
Lori Nielsen  
Denis Noble  
Denis Noble  
Dennis Peach  
John Venus  
Erik Strauts plus a team of at least  
twelve hard-working helpers.  
Susanne Koen

THE STIRLING PLAYERS PRESENT

by special arrangement with DOMINIE Pty Ltd

# PROOF

BY DAVID AUBURN

DIRECTED BY ERIK STRAUSS

STIRLING COMMUNITY THEATRE  
AVENUE ROAD, STIRLING

Fridays and Saturdays

Sept 25, 26, Oct 2, 3, 9, 10 at 8.00pm

Sundays

Sept 27, Oct 4 at 4.00pm

Tickets \$17 Concession \$15 Groups \$12

(GROUPS MUST BE 10 OR MORE, PURCHASED AS ONE TRANSACTION)

Bookings at WISHES FOR YOU 8339 4055

[www.sct.org.au](http://www.sct.org.au)



$$\cot^{n-1} x - \binom{2m+1}{3} \cot^{n-3} x \pm \dots$$

## Cast

**Catherine**

**Mary Marshall**

**Hal**

**Aaron MacDonald**

**Claire**

**Vicki Barrett**

**Robert**

**Denis Noble**

$$p(t) := \binom{2m+1}{1} t^m - \binom{2m+1}{3} t^{m-1} \pm \dots + (-1)^m \binom{2m+1}{2m+1}$$

## The Crew

$$\frac{\pi^2}{6} \left( \frac{2m}{2m+1} \right) \left( \frac{2m-1}{2m+1} \right) < \frac{1}{1^2} + \frac{1}{2^2} + \dots + \frac{1}{m^2} < \frac{\pi^2}{6} \left( \frac{2m}{2m+1} \right) \left( \frac{2m+2}{2m+1} \right)$$

Director	<b>Erik Strauts</b>
Director's Assistant	<b>Kathy Strauts</b>
Production Manager	<b>Jan Farr</b>
Stage Manager	<b>Andrew Zeuner</b>
Set Design	<b>Erik Strauts &amp; Denis Noble</b>
Properties	<b>Heather Jones</b>
Costumes	<b>Kathy Strauts</b>
Hair/Makeup	<b>Michelle Gibbs</b>
Lighting Design	<b>Richard Parkhill</b>
Lighting Operator	<b>Danny Gibbins</b>
Sound Design	<b>Erik Strauts</b>
Sound Operator	<b>Jan Farr</b>
Set Construction	<b>Marcel Boothremmers</b>
Assistant Set Constructions	<b>Kevin Burrett, Nick Johnson</b>
Front of House	<b>Viki Burrett</b>
Publicity	<b>Vee Noble / Lori Nielsen</b>
Ticketing	<b>Lori Nielsen</b>
Programme	<b>Eileen Walton</b>
Graphic Design	<b>Denis Noble</b>
Photography	<b>John Venus</b>
Rehearsal Photography	<b>Jan Farr</b>

The Stirling Players present, by arrangement with Dominie Pty Ltd

# One Flew Over The CUCKOO'S NEST

by Dale Wasserman  
directed by Hayley Horton



**AT THE STIRLING COMMUNITY THEATRE**

Avenue Road, Stirling

Fri & Sat 12, 13, 19, 20, 26, 27 March at 8.00pm

Sundays 14, 21 March at 4.00pm.

Bookings at WISHES FOR YOU 8339 4055

Tickets \$17, concession \$15, groups \$12

groups must be 10 or more, paid as one transaction

[www.sct.org.au](http://www.sct.org.au)

## The Cast

### The Patients

Randle P McMurphy	<i>Steve Parker</i>
Chief Bromden	<i>Stefan Neszpor</i>
Dale Harding	<i>Lindsay Dunn</i>
Billy Bibbit	<i>Todd Clappis</i>
Charles Cheswick	<i>Tim Williams</i>
Frank Scanlon	<i>Tim Edhouse</i>
Anthony Martini	<i>Steve Mellington</i>
Bruce Fredericks	<i>Lorenzo (Sam) Inverardi</i>
Jim Sefelt	<i>Kevin Burrett</i>
Ruckly	<i>James Whitrow</i>
Col. Matterson	<i>Peter Bleby</i>

### The Staff

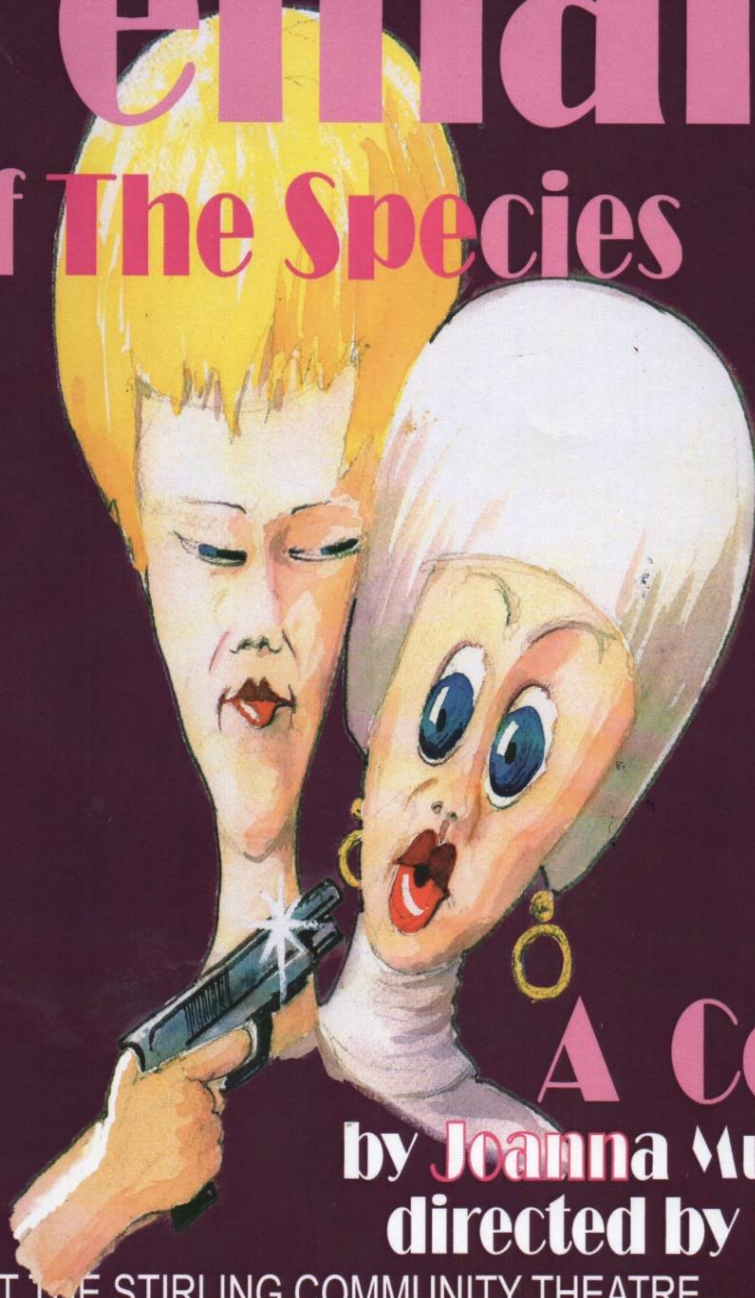
Nurse Ratched	<i>Tracey Walker</i>
Dr Spivey	<i>Steve Marvanek</i>
Nurse Flinn/Candy	<i>Allison Scharber</i>
Nurse Nakamura/Sandra	<i>Julie Dickson</i>
Aide Warren	<i>Alex Newell</i>
Aide Williams	<i>Jack Newell</i>
Aide Turkle	<i>Peter Kentish</i>

## The Crew

Director	Hayley Horton
Assistant to the Director	Jan Farr
Production Manager	Vee Noble
Stage Manager	Malcolm Horton
Set & Graphic Design	Dennis Peach
Prompt	Jan Farr
Set Dressers	Heather Jones/Viki Burrett
Properties	Heather Jones
Costumes	Viki Burrett
Dresser	Heather Jones
Hair/Makeup	Michelle Gibbs
Lighting Design	Richard Parkhill
Lighting & Sound Operator	Erik Strauts
Lighting Apprentice	Jacob Simons
Sound Apprentice	Nathan Wescombe
Set Construction	Denis Noble, Kevin Burrett, Erik Strauts, Maurice Kneen, Marcel Booth-Remmers, Tim Williams and others
Business Manager	Eileen Walton
Front of House	Jan Farr
Publicity	Vee Noble
Displays and Ticketing	Lori Nielsen
Programme	Eileen Walton
Photography	John Venus

THE STIRLING PLAYERS PRESENTS, BY ARRANGEMENT WITH THE PLAYWRIGHT

# The Female Of The Species



**A Comedy**  
by **Joanna Murray Smith**  
directed by **Erik Strauts**

AT THE STIRLING COMMUNITY THEATRE Avenue Road, Stirling  
Fri & Sat 24, 25 Sept., 1, 2, 8, 9 Oct. at 8.00pm  
Sundays 26 Sept., 3 Oct. at 4.00pm.

Bookings - MATILDA BOOKSHOP, 8 Mt. Barker Rd., Stirling 8339 3931

or ON LINE at [www.stirlingplayers.sct.org.au](http://www.stirlingplayers.sct.org.au)

Tickets \$17, concession \$15, groups \$12

**Bakers Delight**  
We're for real.

## The Cast

**Margot Mason**

*Gayle Hammond*

**Molly Rivers**

(a past student of Margot's)

*Eleanor Stankiewicz*

**Tess**

(Margot's daughter)

*Alicia Zorkovic*

**Bryan**

(Tess's husband)

*Steve Marvanek*

**Frank**

(a taxi driver)

*Constantino Dias Mendes*

**Theo**

(Margot's publisher)

*Denis Noble*

## The Crew

Director	<b>Erik Strauts</b>
Assistant Director/Prompt	<b>Kathy Strauts</b>
Production Manager	<b>Jan Farr</b>
Stage Manager	<b>Patsy Thomas</b>
Set & Graphic Design	<b>Denis Noble</b>
Lighting Design	<b>Richard Parkhill</b>
Rehearsal Stand-in	<b>Natasha Watzdorf</b>
Props	<b>Heather Jones</b>
Costumes	<b>Viki Burrett</b>
Hair/Makeup	<b>Michelle Gibbs</b>
Light/Sound Operator	<b>Paul Tossell</b>
Construction Manager	<b>Erik Strauts</b>
Construction Crew	<b>Nick Johnson, Ben Calcraft, Brian Donaghy, Denis Noble, Maurice Kneen, Steve Marvanek, Kevin Burrett</b>
Front of House	<b>Vee Noble</b>
Publicity	<b>Lori Nielsen, Viki Burrett, Peter Bleby</b>
Ticketing	<b>Lori Nielsen, Maurice Kneen</b>
Programme	<b>Eileen Walton</b>
Photography	<b>John Venus</b>

THE STIRLING PLAYERS PRESENT  
BY SPECIAL ARRANGEMENT WITH HLA MANAGEMENT PTY LTD.

# SCENES FROM A SEPARATION

BY ANDREW BOVELL & HANNIE RAYSON  
DIRECTED BY MEGAN DANSIE



AT THE STIRLING COMMUNITY THEATRE AVENUE ROAD, STIRLING  
FRI & SAT FEB. 18, 19, 25, 26, MAR. 4, 5 AT 8.00PM, SUN FEB. 20, 27 AT 4.00PM

TICKETS \$18, CONC. \$16, GROUPS OF 10 OR MORE, \$13

BOOKINGS, MATILDA BOOKSHOP 8339 3931, 8 MT. BARKER ROAD, STIRLING

OR [www.stirlingplayers.sct.org.au](http://www.stirlingplayers.sct.org.au)

ADULT THEMES

*Bakers Delight*  
We're for real.

*M*  
Mount Lofty House  
Adelaide Hills  
Great Heritage



## THE CAST

Nina Moss .....	Rachel Burfield
Mathew Molyneux .....	Tim Williams
Siobahn McArdle .....	Alicia Zorkovic
Darcy Molyneux .....	Steve Marvanek
Lawrence Clifford .....	Lindsay Dunn
Sarah Moss .....	Nicole Ruddy
Margaret Molyneux .....	Vee Noble

## THE CREW

Director .....	Megan Dansie
Production Manager .....	Jan Farr
Stage Manager .....	Erik Strauts
Set Design .....	Erik Strauts
Lighting Design .....	Richard Parkhill
Prompt .....	Tracey Walker
Sound Design .....	Paul Tossell
Properties .....	Heather Jones
Crew .....	Jan Farr & Eileen Walton
Costumes .....	Viki Burrett & Cast
Hair/Makeup .....	Heather Jones & Cast
Lighting Operators.....	Danny Gibbins & Scott Reynolds
Set Construction .....	Erik Strauts
	& Members of the Stirling Players
Front of House .....	Kevin Burrett & Malcolm Walton
Publicity.....	Viki Burrett, Lori Nielsen & Peter Bleby
Ticketing .....	Lori Nielsen & Maurice Kneen
Programme .....	Eileen Walton
Graphic Design .....	Denis Noble
Photography .....	John Venus

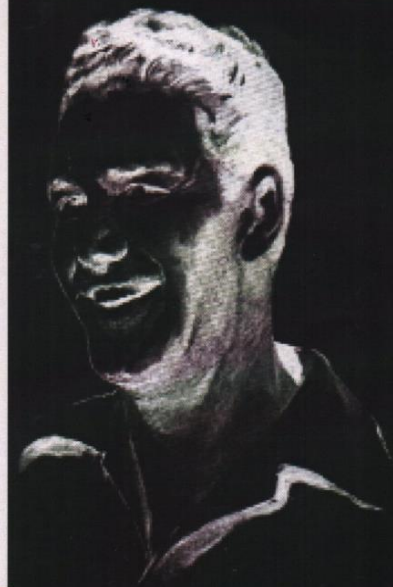
# LIFE

THE  
*Stirling  
Players*  
INCORPORATED

## AFTER GEORGE

BY HANNIE RAYSON, DIRECTED BY JOHN GRAHAM

PRESENTED BY THE STIRLING PLAYERS, BY ARRANGEMENT WITH HLA MANAGEMENT PTY LTD.



AT THE STIRLING COMMUNITY THEATRE, AVENUE ROAD, STIRLING  
FRIDAYS AND SATURDAYS 7, 8, 14, 15, 21, 22 OCTOBER AT 8.00PM, AND  
SUNDAYS 9, 16 OCTOBER AT 4.00PM

BOOKINGS - MATILDA BOOKS, 8 MT. BARKER ROAD, STIRLING 8339 3931,

OR ON-LINE AT [www.stirlingplayers.sct.org.au](http://www.stirlingplayers.sct.org.au)

TICKETS \$18, CONC. \$16, GROUPS OF 10 OR MORE \$13

*Bakers Delight*  
We're for real.

## CAST

(In order of appearance)

Ana George.....**Miriam Keane**  
Peter George.....**Erni Tinesz**  
Alan Duffy.....**Malcolm Walton**  
Beatrix George.....**Shona Benson**  
Lindsay Graham.....**Shelley Hampton**  
Poppy Santini.....**Angelique Houston**

## THE CREW

Director ..... John Graham  
Asst Director ..... Sophie Edhouse  
Production Manager ..... Viki Burrett  
Asst Production Manager.....Helen Yakovleff  
Stage Manager ..... Patsy Thomas  
Set Design ..... Erik Strauts  
Lighting Design ..... Richard Parkhill  
Lighting Operator.....Danny Gibbins  
Sound Design .....Paul Tossell  
Sound Operator ..... Danny Gibbins  
Properties ..... Heather Jones  
Costumes .....Robyn Smith  
Hair/Makeup .....Robyn Smith  
Set Construction .....Erik Strauts, Denis Noble,  
Nick Johnson & Members of the Stirling Players  
Front of House ..... Vee Noble  
Publicity.....Viki Burrett, Lori Nielson & Peter Bleby  
Ticketing ..... Lori Nielson & Maurice Kneen  
Programme ..... Eileen Walton  
Graphic Design ..... Denis Noble  
Photography ..... John Venus  
Composer.....Tim Edhouse

**COMPILED BY  
BRONWYN CHAPPLE  
FOR THE  
50<sup>TH</sup> ANNIVERSARY YEAR  
OF THE STIRLING PLAYERS**





